

Arizona

Arizona State University
School of Architecture and
Landscape Architecture
PI: Jason Griffiths
<http://design.asu.edu/sala>

Arkansas

University of Arkansas
School of Architecture
PI: Micheal Hughes
<http://architecture.uark.edu>

California

Academy of Art University
School of Architecture
PI: Pierluigi Serriano
<http://www.academyart.edu/architecture-school/index.html>

California Polytechnic State University,
San Luis Obispo
College of Architecture
PI: Tom Fowler IV
<http://www.arch.calpoly.edu>

University of California at Los Angeles
Capital Program
PI: Sharif Rahman

Connecticut

Joel Barlow High School
Department of Technology
PI: Thomas Potpinka
<http://www.joelbarlowps.org>

Florida

Florida Atlantic University
School of Architecture
PI: Aron Temkin
<http://www.fau.edu/arch>

University of Florida

School of Architecture
PI: John Maze
<http://www.dcp.ufl.edu/arch>

Georgia

Southern Polytechnic State Univ.
School of Architecture
PI: Christopher Welty/ Saleh Uddin
<http://www.spsu.edu>

Hawaii

Chaminade University of Honolulu
Humanities and Fine Arts
PI: David Coleman
<http://www.chaminade.edu>

Indiana

University of Notre Dame
Architecture
PI: Gil Gorski
www.nd.edu

Illinois

Illinois Central College
Arts and Communications Department,
Architecture Program
PI: Al Rusch
<http://www.icc.edu>

Loyola Academy

Fine Arts Department
PI: James E. Cleland
<http://www.goramblers.org>

Maryland

University of Maryland
School of Architecture, Planning and
Preservation
PI: Michael A. Ambrose
<http://www.arch.umd.edu>

Massachusetts

Boston Architectural College
Department of Design Media, Arts
and Computing
PI: Diego Matho
<http://www.the-bac.edu>

Harvard University

Graduate School of Design, Department
of Landscape Architecture
PI: Stephen Ervin
<http://www.gsd.harvard.edu>

Wentworth Institute of Technology

Architecture Department
PI: Michael MacPhail
<http://www.wit.edu>

Minnesota

Anoka Ramsey Com. College
Technological Studies
PI: Barbara Hanus

Bemidji State University

Department of Technological Studies
PI: Bonnie Higgins
<http://www.bemidjistate.edu>

Minneapolis College of Art and Design

Department of Fine Arts
PI: Brad Jirka
<http://www.mcad.edu>

Missouri

Drury University
Hammons School of Architecture
PI: David Beach
<http://www.drury.edu>

Nebraska

University of Nebraska, Lincoln
College of Architecture
PI: Steve Hardy
<http://archweb.unl.edu>

New Mexico

University of New Mexico
School of Architecture
PI: Tim Castillo
<http://saap.unm.edu>

New York

The Dalton School
Art Department
PI: Robert Meredith
<http://www.dalton.org>

Hofstra University

Department of Fine Arts
PI: Alex Roskin
<http://www.hofstra.edu>

Pratt Manhattan

Center for Continuing and Professional
Studies
PIs: Karen Miletsky, Lara Guerra
<http://www.pratt.edu>

Syracuse University

School of Architecture
PI: Bruce Coleman
<http://www.soa.syr.edu/index.php>

North Carolina

North Carolina State University
College of Design
PI: Arthur Rice
<http://ncsudesign.org/content>

North Dakota

North Dakota State University
Department of Architecture and
Landscape Architecture
PI: Ganapathy Mahalingam
<http://ala.ndsu.edu>

Ohio

Columbus College of Art and Design
Industrial and Interior Design
PI: Ben Haslow / Martha Allison
<http://www.ccad.edu>

Columbus State Com. College

Construction Sciences Department
PI: Robert D. Ritchie
<http://www.csc.edu>

Delaware Area Career Center

Architecture & Engineering
Technologies
PI: Kelly T. Kohl
<http://www.delawareareacc.org>

Miami University

Department of Architecture and
Interior Design
PI: Murali Parandani
<http://fna.muohio.edu/arcweb/index2/index.html>

Ohio State University

Department of Design
PI: Susan Melsop

Ohio State University

Knowlton School of Architecture
PI: Matthew Bernhardt
<http://www.knowlton.osu.edu>

Ohio University

Human and Consumer Sciences
PI: David Matthews
<http://www.ohiou.edu/humanandconsumer>

University of Cincinnati

College of Design, Architecture, Art,
and Planning
PI: Anton Harfmann
<http://www.daap.uc.edu>

Oklahoma

University of Oklahoma
College of Architecture
PI: Abimbola Asojo
<http://coa.ou.edu>

Pennsylvania

Pennsylvania State University
Architecture Department
PI: Reggie Aviles
<http://www.arch.psu.edu>

Pennsylvania State University

Architecture, Information Technology
Services
PI: George Otto

Temple University

Architecture Program
PI: Robert Trempe
<http://www.temple.edu/architecture>

University of the Arts

Crafts/ Industrial Design
PIs: Rod McCormick
<http://www.uarts.edu>

Rhode Island

Rhode Island School of Design
Interior Architecture Department
PI: Brian Kernaghan
<http://www.risd.edu/interiorarch.cfm>

Roger Williams University

School of Architecture, Art and Historic
Preservation
PIs: Roseann Evans, Andrew Thurlow
<http://www.rwu.edu/academics/schools/saahp>

Tennessee

University of Tennessee
College of Architecture and Design
PI: Jeff Wilkinson
<http://www.arch.utk.edu>

Texas

Texas Tech University
College of Architecture
PI: Bennett Neiman
<http://www.arch.ttu.edu>

University of Texas at Arlington

School of Architecture
PI: Thomas Rusher
<http://www.uta.edu/architecture>

University of Texas at San Antonio

College of Architecture
PI: Taeg Nishimoto
<http://www.utsa.edu/architecture>

Washington

University of Washington
College of Architecture and Urban
Planning
PI: Brian R. Johnson
<http://www.caup.washington.edu>

Wisconsin

University of Wisconsin, Marathon County
Art Department
PI: Thomas Fleming
<http://www.uwmc.uwc.edu/art>

International

Australia

Australian National University
School of Art
PI: Gilbert Riedelbauch
<http://www.anu.edu.au>

University of New South Wales
School of Design Studies, College of Fine Arts
PI: Rod Bamford
<http://www.cofa.unsw.edu.au/schoolsunits/schools/design>

Austria

Technische Universität Wien
EDV-Labor Architektur
PI: Gunther Wehrberger
<http://www.archlab.tuwien.ac.at>

Brazil

Universidade de Brasilia
Faculdade de Arquitetura e Urbanismo
PI: Neander Silva
www.unb.br/fau/pos_graduacao/especializacao

Canada

Carleton University
School of Architecture
PI: Benjamin Gianni
<http://www.arch.carleton.ca>

CEGEP Marie-Victorin
Design D'Intérieur
PI: Michel Vincent
<http://www.collegemv.qc.ca>

CEGEP de St. Laurent
Department de Technologie de l'Architecture
PI: Edourd Staco
<http://www.cegep-st-laurent.qc.ca>

Concordia University
Design and Computation Arts
PI: Martin Racine
<http://design.concordia.ca>

McGill University
School of Architecture
PI: Torben Berns
<http://www.mcgill.ca/architecture>

Ridley College
Art
PI: Giles Campbell
<http://www.ridley.on.ca>

Ryerson University
Department of Architectural Science
PI: Vincent Hui
<http://www.ryerson.ca/ualca/programs/arch.html>

Sheridan College
BAA Illustration
PI: Ian Stewart
<http://www.siat.sfu.ca>

Université de Montréal
École de design industriel
PI: Simon Doucet
<http://www.din.umontreal.ca>

University of British Columbia
School of Architecture
PI: Jerzy Wojtowicz
<http://www.sala.ubc.ca>

University of Waterloo
School of Architecture
PI: Matthew Oliver
<http://www.architecture.uwaterloo.ca>

Ecuador

Universidad San Francisco de Quito
Colegio de Arquitectura
PI: Marco Villegas
<http://www.usfq.edu.ec>

Germany

Hochschule Darmstadt
Architecture
PI: Lars Uwe Bleher
www.fba.h-da.de

Hochschule Rosenheim

Interior Architecture
PI: Linn Song
<http://innenarchitektur.fh-rosenheim.de/Song>

Fachhochschule Potsdam

School of Architecture
PIs: Bettina Dittmer
<http://www.fh-potsdam.de>

Staatliche Hochschule für

Gestaltung Karlsruhe
Product Design
PI: Stefan Legner
<http://solaris.hfg-karlsruhe.de/hfg>

Technische Universität Darmstadt

Department of Architecture
PI: Asterios Agkathidis
<http://www.tu-darmstadt.de>

Greece

National Technical University of Athens
School of Architecture
PI: Anastasia Pehlivanidou - Liakata
http://www.ntua.gr/en_index.htm

Guatemala

Universidad Francisco Marroquin
Facultad de Arquitectura
PI: Hector A. Santamarina
<https://www.ufm.edu/index.php>

Japan

Chubu University
Architecture
PI: Kenichi Nakamura
<http://www.chubu.ac.jp>

Kanto-Gakuin University
Department of Human Environmental Design
PI: Takashi Nakajima
<http://www.kanto-gakuin.ac.jp>

Nishinippon University
Department of Architecture
PI: Kentaro Yagi
<http://www.nishitech.ac.jp>

Tokyo Kogakuin College of Technology
Architecture Department
PI: John F. Leaver III
<http://www.technosac.jp>

Yokohama International School
ICT
PI: Brian Lockwood
www.yis.ac.jp

Latvia

Liepaja Secondary Art School
Interior Design
PI: Varis Silins
lmv@lmv.lv

The Netherlands

Gerrit Rietveld Academie
Department of Architectural Design
PI: Christiaan Thiel
<http://www.gerritrietveldacademie.nl>

Koninklijke Akademie van Beeldende Kunsten

Interieur Architectuur
PI: Frans Willingers
<http://www.kabk.nl>

Norway

Kusthøgskolen, Oslo
IT Department
PI: Ivan Holt
<http://www.khio.no>

Norwegian University of Science and Technology

Faculty of Architecture and Fine Arts
PI: Knut Rø
<http://www.ntnu.no>

Oman

German University of Technology in Oman
UPAD
PI: Barbara Stauble
www.gutech.edu.om

Saudi Arabia

Effat University
Architecture
PI: Dr. Mervat El-Shafie
www.effatuniversity.edu.sa

King Abdulziz University

Architecture
PI: Dr. Khaled Ali Yousef
<http://www.kau.edu.sa>

King Fahd University of Petroleum & Minerals

Department of Architecture
PI: Yahya J. Al-Najjar
<http://www.kfupm.edu.sa>

King Faisal University

Architecture
PI: Dr. Bhzad Sidawi
www.kfu.edu.sa

King Saud University
Architecture and Building Sciences
PI: Dr. Mohammed Ali Banobil
<http://www.ksu.edu.sa>

Switzerland

Haute Ecole d'Arts Appliqués
Department of Interior Architecture
PI: Rémy Bochet
<http://www.hesge.ch/hea/>

Hochschule für Technik
Architektur
PI: Peter Weber
<http://www.hsz-t.ch>

Swiss Federal Institute of Technology Zürich
Department of Architecture
PIs: Serge Bilgeri
<http://www.arch.ethz.ch>

University of Applied Sciences Western Switzerland

Architecture
PI: Simon Simos
www.hesge.ch/hepia

University of Applied Sciences & Arts Zürich

Departments of Interior Design and Product Design
PI: Barbara Berger
<http://www.zhdk.ch>

Zürcher Hochschule Winterthur

Department of Architecture
PI: Amadeo Sarbach
<http://www.zhaw.ch>

Taiwan

Tamkang University
Department of Architecture
PI: Chen-Cheng Chen
<http://www.tku.edu.tw>

Thailand

International School Bangkok
I.T. Department
PI: Samith Laornual
<http://www.isb.ac.th>

Uganda

Uganda Martyrs University
Faculty of Building Technology and Architecture
PI: Mark Olweny
<http://www.fiuc.org/umu>

United Arab Emirates

American University of Sharjah
School of Architecture and Design
PI: Nabeel Amireh
<http://www.aus.edu>

United Kingdom

Bath Spa University College
Bath School of Art and Design
PI: Roger Clarke
<http://www.bathspa.ac.uk>

Glasgow Caledonian University

Department of Engineering, Science and Design
PI: Philip Orme
<http://www.gcal.ac.uk>

South Devon College

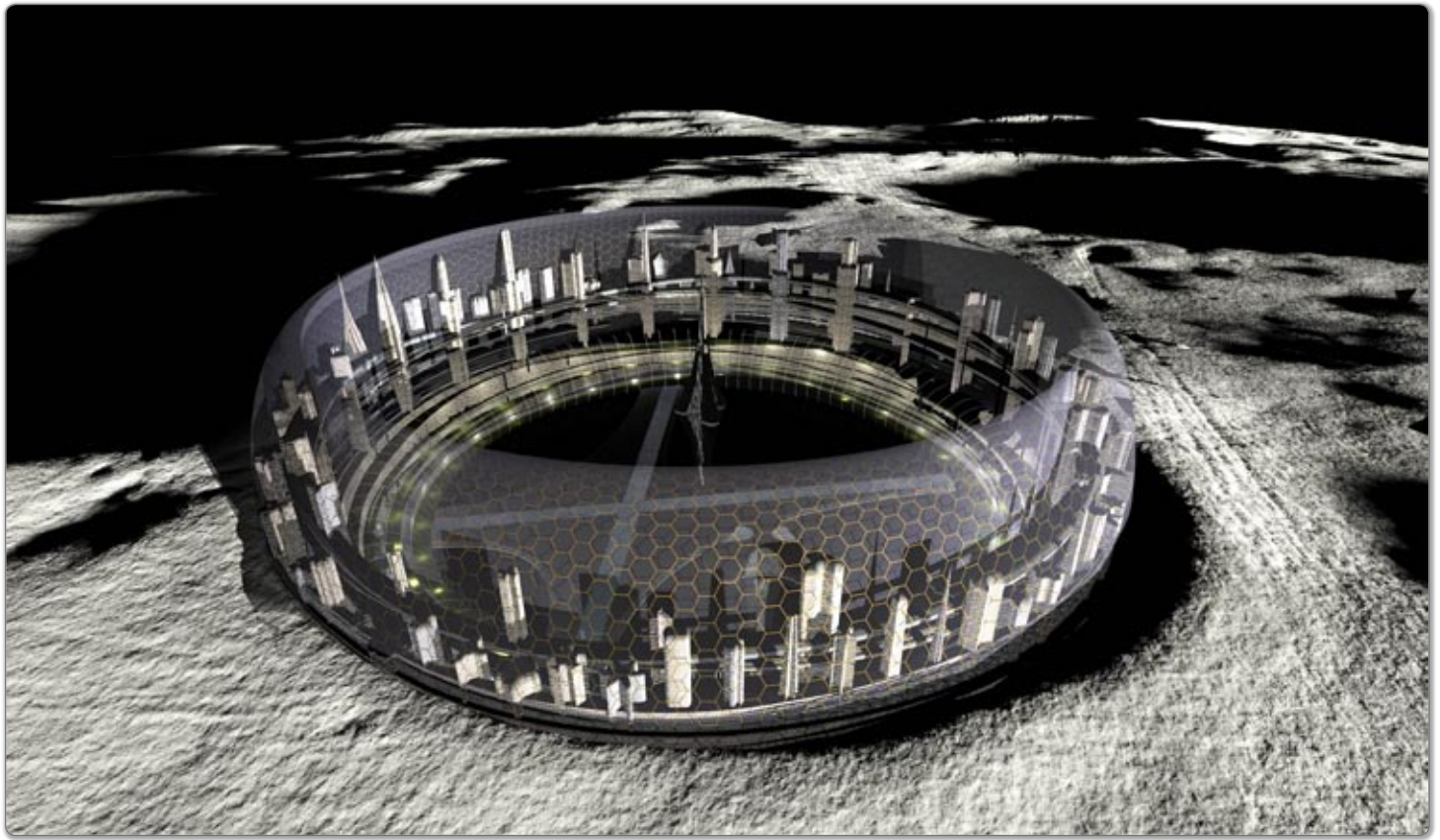
Department of Visual Arts
PI: Keith McDonagh
<http://www.southdevon.ac.uk>

University of Strathclyde

Department of Architecture
PI: Mike Grant
<http://www.strath.ac.uk/architecture>

University of Wales Institute, Cardiff

School of Art and Design
PI: Charlotte Bull
<http://www2.uwic.ac.uk>



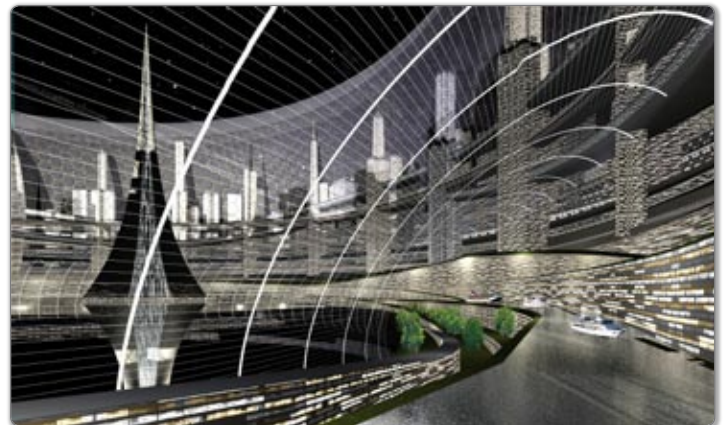
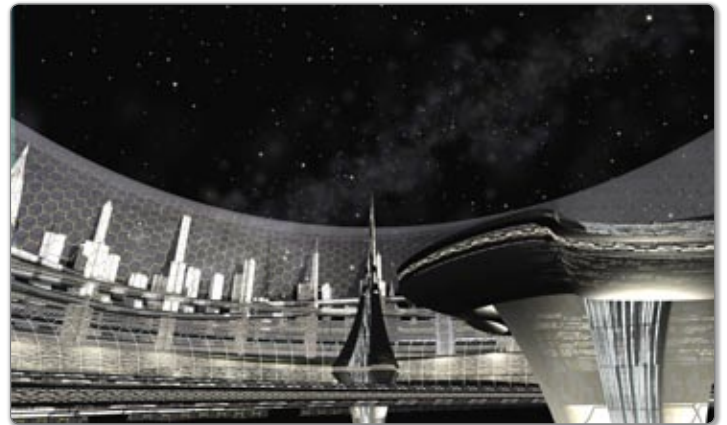
Envisioning A Lunar City

by **Kevin Cespedes**

The Boston Architectural College and Wentworth Institute of Technology

Crater city is a manifestation of lunar colonization over a period of several centuries. It was born out of a terrestrial crisis of natural resource exhaustion and overcrowding. This first Lunar City emerged from a darker period of desperate mining for Helium-3 (He-3) and water in the form of ice. Political and economic corruption fueled the crisis, which led to a final rebellion resulting in the independence of free city-states upon the moon.

Crater city has all the physical characteristics of many of the urban enclaves one might expect on Earth, but of Lunar dimensions. The 'Rim' is the main feature of the city, a dense super skyline of mile-high towers agglomerated in a ring pattern 20 km in diameter. It is veiled within a toroidal superstructure of embedded Photovoltaic (PV) mesh in order to take advantage of the continual 360 degree sunlight exposure that exists at the moon's south pole. Crater City lies embedded on the inner slopes of what was then known as Shackleton Crater, whose basin is one of the few locations in the South Polar Region that sees no light (with temperatures reaching minus 400 F). The city, as is typical of mining towns that grow around such naturally occurring material wealth, exhausted nearly all of the resource deposits some time ago. The subsequent use of the basin became a municipal historic site dedicated to the task of research and tourism. The city continues its development as a post industrial society. The city became a pleasure dome. Low gravity jump sports such as gliding and bungee become popular tourist activities. Visitors can walk the parklands at the lower base of the ring through open courtyards and plazas, enjoy low gravity water sport along the river viaduct, or pursue the more urbane and off-worldly pleasures of the lunar city.



AutoDesSys

2011 Riverside Drive Columbus, OH 43221

Phone: (614) 488-8838 Fax: (614) 488-0848

www.autodesys.com

